

A collision-resilient aerial vehicle with icosahedron tensegrity structure

Jiaming Zha, Xiangyu Wu, Joseph Kroeger, Natalia Perez and Mark W. Mueller

Abstract—Aerial vehicles with collision resilience can operate with more confidence in environments with obstacles that are hard to detect and avoid. This paper presents the methodology used to design a collision resilient aerial vehicle with icosahedron tensegrity structure. A simplified stress analysis of the tensegrity frame under impact forces is performed to guide the selection of its components. In addition, an autonomous controller is presented to reorient the vehicle from an arbitrary orientation on the ground to help it take off. Experiments show that the vehicle can successfully reorient itself after landing upside-down and can survive collisions with speed up to 6.5m/s.

I. INTRODUCTION

It is challenging for Unmanned Aerial Vehicles (UAVs) to operate in environments with complex obstacles that are hard to detect and difficult to avoid. Collisions with these obstacles can disrupt missions and damage vehicles. To address this problem, many collision resilient designs are proposed to help aerial vehicles operate safely in a wide range of environments. Most of these designs fall into one of three major categories:

- 1) Adding additional propeller guards [1], [2].
- 2) Covering the whole vehicle with an external impact resilient shell [3], [4], [5].
- 3) Using novel materials that decrease the stiffness of the vehicle during collisions [6], [7].

Resilient designs of the first category protect propellers, a key yet vulnerable part of aerial vehicles, from damage in collisions. For example, spherical guards that can passively rotate about vehicle propellers are proposed in [1]. The design prevents the vehicle from bending moment during collisions and thus increases its surviving rate.

Meanwhile, designs with external shells provide an all-around protection. For instance, a collision resilient flying robot protected by a spherical shell with an inner gimbal system is proposed in [3]. The design decouples its outer protective shell from its inner propulsion system. As a result, the inner frame can remain stable during collisions. On the other hand, a cargo drone with an origami-inspired external protective shell is demonstrated in [4]. The vehicle can be folded to reduce its storage volume.

Collision resilient designs of the last category utilize novel materials. A quadcopter frame made of dual stiffness materials is proposed in [6]. The frame stays rigid during normal flights, and becomes soft to absorb energy once it collides. Similarly, a flexible propeller blade that bends when colliding with obstacles is presented in [7].

The authors are with the HiPeRLab, University of California, Berkeley, CA 94720, USA. {jiaming_zha, wuxiangyu, jrkroeger, nataliaperez, mwm}@berkeley.edu

In this work, we design a vehicle with resilience to collisions at high speed, which can be essential for time-critical operations such as search and rescue missions. To achieve high collision resilience, we protect the vehicle with an icosahedron tensegrity (tensile-integrity) structure. A tensegrity structure is constructed with rigid bodies suspended in a tension network. The unique static and dynamic features of tensegrity structures have been studied by many (e.g. [8], [9]). Due to these features, an icosahedron tensegrity structure can distribute load among its members and does not experience bending moment in collisions. As a result, the structure can provide high impact resilience with a light weight, and it has consequently been proposed as a potential candidate for planetary landers [10] and exploratory rovers [11], [12]. Moreover, an investigation on various tensegrity designs for aerial vehicle protection has been made in [13].

The contribution of this work is as follows. We present the methodology used to design a collision resilient aerial vehicle that takes advantage of the high impact-tolerance of tensegrity structures. We introduce an analysis tool that approximates the stress in the tensegrity frame during collisions and use the tool to guide the selection of tensegrity components. In addition, we propose a controller that can reorient the vehicle from an arbitrary orientation on the ground to help it take off again if crash happens. The proposed controller exploits the 20-faced geometry of the icosahedron tensegrity and divides the task into simple rotations that are easy to analyze and implement.

With the proposed methodology, we achieve a new collision resilient vehicle that can safely operate at high speed despite the presence of obstacles and can resume its operation



Fig. 1: The icosahedron structured aerial vehicle. The length of each rod in the icosahedron tensegrity shell is 20cm.

after collisions. The vehicle, shown in Fig. 1, is protected by an orthogonal icosahedron [14] tensegrity shell made with carbon fiber rods and high tensile braided fishing lines, which provide collision resilience with a light weight. The vehicle weighs 252g and it has repeatedly survived the test of colliding with a concrete wall at 6.5m/s.

II. DESIGN OF THE TENSEGRITY STRUCTURE

In this section, we introduce the design objectives of the tensegrity structure, the stress analysis used to guide the design and the criteria for selecting tensegrity components.

A. Design objectives

The goal of the tensegrity structure is to protect the quad-copter inside, which has to survive collisions and continue its operation. As a result, the deformation of the tensegrity structure should be small during the collision so that vulnerable parts like sensors and propellers are not exposed to obstacles. Moreover, the tensegrity structure should also be lightweight, so that the additional mass of the structure has limited influence on the vehicle's flight performance and payload capacity.

B. Simplified stress analysis of icosahedron tensegrity

The design of the icosahedron tensegrity structure is guided by the stress its components experience during the collisions. To simplify the analysis, we consider only the moment when the vehicle is experiencing the largest impact force from the obstacle. To further simplify the problem, we additionally assume that: 1) the vehicle's weight is small compared to the impact force and can be neglected; 2) the deformation of the tensegrity structure is small so that the geometry of the tensegrity structure remains unchanged. The second assumption is a close approximation, because stiff strings are used in the design to prevent large deformations that may expose vulnerable parts like propellers to collisions.

Forces in the tensegrity structure can thus be approximately solved from the following problem. Shown in Fig. 2, an icosahedron tensegrity is fixed on the ground with three connections. Vertical forces with a sum of F_{max} , the maximum impact force in a collision, is applied to the top nodes of the vehicle. Due to symmetry, we only need to consider two configurations: forces act on a face with three string-pieces or on a face with two string-pieces. Moreover, for each configuration, we consider following scenarios: the total impact force is evenly distributed among 1, 2 or 3 nodes.

The equilibrium equations of the system can then be formulated. The icosahedron tensegrity has 12 nodes. Denote the nodes as \mathbf{n}_i , where $i = 1, \dots, 12$. These nodes are connected by 6 rods and 20 string-pieces. We denote the connectivity of the nodes with functions N_r and N_s :

$$N_r(i, j) = \begin{cases} k, & \text{if rod } k \text{ connects } \mathbf{n}_i \text{ and } \mathbf{n}_j \\ 0, & \text{otherwise} \end{cases} \quad (1)$$

$$N_s(i, j) = \begin{cases} l, & \text{if string-piece } l \text{ connects } \mathbf{n}_i \text{ and } \mathbf{n}_j \\ 0, & \text{otherwise} \end{cases} \quad (2)$$

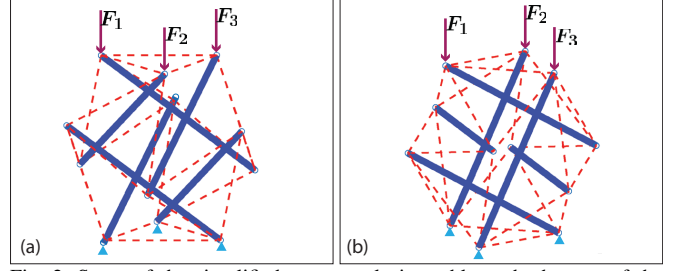


Fig. 2: Setup of the simplified stress analysis problem: the bottom of the tensegrity is connected to the ground, and forces are exerted to tensegrity's top nodes. Two configurations are considered: (a) Forces act on a face with three string-pieces. (b) Forces act on a face with two string-pieces.

Denote T_l as the magnitude of the tensile force in string-piece l , and C_k as the magnitude of the compression force in rod k . Use $\mathbf{U}_i^B \in \mathbb{R}^3$ to represent the external force on \mathbf{n}_i in the vehicle body frame. Define $\mathbf{s}_{i,j}^B$ as the unit vector along the string-piece from \mathbf{n}_i to \mathbf{n}_j , whereas $\mathbf{r}_{i,j}^B$ as the unit vector along the rod from \mathbf{n}_i to \mathbf{n}_j . Both vectors are in the vehicle body frame.

At equilibrium, the sum of forces acting on each node is zero:

$$\sum \mathbf{F}_i = 0 \quad (3)$$

This equation comes from Newton's law with the assumption that each node has zero acceleration. A more rigorous derivation of tensegrity equilibrium can be found in [15]. Expand the equation, we have for each node i :

$$\sum_{\{j|N_r(i,j) \neq 0\}} -C_k \mathbf{r}_{i,j}^B + \sum_{\{j|N_s(i,j) \neq 0\}} T_l \mathbf{s}_{i,j}^B + \mathbf{U}_i^B = 0 \quad (4)$$

where the indices of string-pieces, l and the indices of rods, k , come from connectivity functions: $l = N_s(i, j)$ and $k = N_r(i, j)$.

Due to the existence of self-stress in the icosahedron tensegrity, the structure is statically indeterminate [16]. With the assumption that the members of the tensegrity structure follow Hooke's law when the deformation is small, we apply the principle of minimum energy and solve for a minimum energy configuration solution under equilibrium constraints, with a method similar to the one presented in [17]:

$$\begin{aligned} \min_{T, C, \mathbf{U}^B} \quad & \sum_k \frac{1}{2} K_r (\epsilon_k L_r)^2 + \sum_l \frac{1}{2} K_s (\epsilon_l L_s)^2 \\ \text{s.t.} \quad & \text{Equilibrium condition: Eq. (4)} \\ & \epsilon_k = \frac{C_k}{E_s A_s} \\ & \epsilon_l = \frac{T_l}{E_r A_r} \geq 0 \end{aligned} \quad (5)$$

Constants K , E , A , L denote Hooke's constant, Young's modulus, cross sectional area and length respectively. Subscripts s and r represents string-pieces and rods. ϵ_k and ϵ_l are the strain of rod k and string-piece l . Notice that the

strain of the string-pieces is constrained to be positive as the string-pieces cannot be compressed.

Finally, compare the results of all possible configurations and external force scenarios. Define the maximum compression force in rods as C_{max} and maximum tensile force in string-pieces as T_{max} .

C. Selection of tensegrity components

Tensegrity components (rods and strings) in the structure should survive the maximum tensile and compression force found in the previous subsection. In other words, the stress in the string should be smaller than its yielding strength σ_{ys} with a factor of safety η_s :

$$\eta_s \frac{T_{max}}{A_s} < \sigma_{ys} \quad (6)$$

Meanwhile, the maximum stress in the rod should be smaller than both its yielding strength σ_{yr} and its critical buckling strength σ_{br} with factors of safety η_{r1} and η_{r2} .

$$\eta_{r1} \frac{C_{max}}{A_r} < \sigma_{yr}, \eta_{r2} \frac{C_{max}}{A_r} < \sigma_{br} \quad (7)$$

The critical buckling strength of the rod can be approximated with Euler's buckling theory:

$$\sigma_{br} = \frac{\pi^2 E_r I_r}{A_r (L_r)^2} \quad (8)$$

Here I_r is the second moment of area of the rod.

III. VEHICLE CONTROLLERS AND STATE ESTIMATORS

A. Sensing and state estimation

The vehicle's onboard sensing system is based on an Inertial Measurement Unit (IMU) that provides information about the vehicle's acceleration and angular velocities. A motion capture system is used to provide off-board estimation of the vehicle's full 6 degrees of freedom position and orientation states. The onboard rate gyroscope is also used in flight for attitude estimation and angular velocity feedback.

During the reorientation process, however, the vehicle is assumed to lose access to the motion capture system due to occlusion of motion capture markers and thus solely relies on its IMU for state estimation. It estimates its attitude from accelerometer and rate gyroscope measurements with a complementary filter.

B. Flight controller

The overall control strategy of the vehicle is presented in Fig. 3. It features a cascaded control structure: a position controller outputs desired total thrust and thrust direction, whereas an attitude controller computes desired torques. Finally, a thrust converter maps the total thrust and body torque commands to per-propeller thrust commands. This cascaded structure can be decoupled into two separate parts: an offboard controller for position and attitude control, and an onboard part implementing thrust conversion.

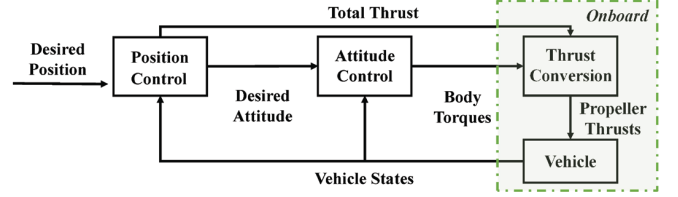


Fig. 3: Control architecture of the vehicle.

The position controller makes position error act as a second order system with damping ratio ζ_p and natural frequency ω_p :

$$\ddot{\mathbf{d}}_d^E = 2\zeta_p\omega_p(\dot{\mathbf{d}}_d^E - \dot{\mathbf{d}}^E) + \omega_p^2(\mathbf{d}_d^E - \mathbf{d}^E) \quad (9)$$

where \mathbf{d}^E is the position of the vehicle, $\dot{\mathbf{d}}_d^E$ is desired acceleration, $\dot{\mathbf{d}}_d^E$ is desired velocity and \mathbf{d}_d^E is desired position. All vectors are in the Earth frame. Thus, we can find desired total thrust and its direction as:

$$\mathbf{f}_d = m\|\ddot{\mathbf{d}}_d^E\|_2, \quad \mathbf{z}_{B,d} = \frac{\dot{\mathbf{d}}_d^E}{\|\dot{\mathbf{d}}_d^E\|_2} \quad (10)$$

A desired angular velocity $\boldsymbol{\omega}_d^B$ is computed as proportional to the orientation error and then an desired angular acceleration is computed as follows:

$$\dot{\boldsymbol{\omega}}_d^B = \frac{1}{\tau}(\boldsymbol{\omega}_d^B - \boldsymbol{\omega}^B) \quad (11)$$

where $\boldsymbol{\omega}^B$ is the angular velocity measured by rate gyroscope and τ is the desired time constant. All vectors are in vehicle's body frame. Thus, the desired torque follows as:

$$\boldsymbol{\tau}_d^B = \mathbf{J}\dot{\boldsymbol{\omega}}_d^B \quad (12)$$

Where \mathbf{J} is the moment of inertia of the vehicle.

Finally, the thrust converter computes the desired thrust force for each propeller as follows:

$$\mathbf{f}_{P_i} = \frac{1}{4} \left(\begin{bmatrix} r_{i,y}^{-1} & -r_{i,x}^{-1} & \kappa^{-1} \end{bmatrix} \boldsymbol{\tau}_d^B + \mathbf{f}_d \right) \quad (13)$$

where \mathbf{r}_i is a vector pointing from center of mass to propeller i and $r_{i,x}$ and $r_{i,y}$ are the components of \mathbf{r}_i along the x-axis and y-axis of the body frame. κ is the propeller torque constant.

IV. AUTONOMOUS REORIENTATION

In this section, we introduce the controller used to autonomously reorient the vehicle from an arbitrary orientation on the ground to help it take off.

A. Problem setup

The icosahedron tensegrity has twenty faces, numbered from 1 to 20, as shown in Fig. 4. After collisions, the tensegrity will land with one of its faces on the ground. We denote the contact face as F_i if the i^{th} face of the tensegrity is touching the ground. In most of the attitudes, the propellers are not pointing upwards, and it is very difficult for the tensegrity vehicle to take off. The goal of autonomous reorientation is to find a series of control inputs that can rotate the vehicle back to an attitude from which it can easily take off.

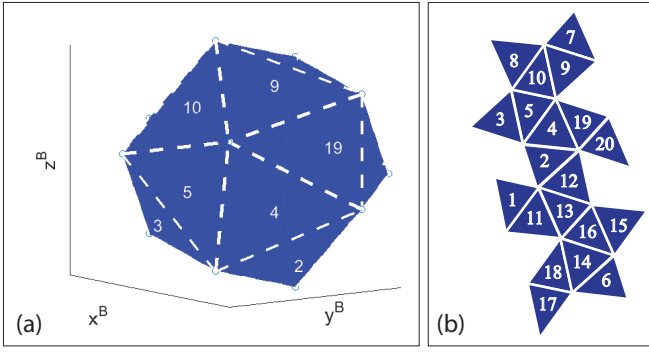


Fig. 4: The icosahedron tensegrity structure has 20 faces, numbered from 1 to 20. (a): Isosymmetric view of icosahedron tensegrity. (b): Faces of an unfolded icosahedron tensegrity.

B. Contact face identification

To successfully rotate to a desired attitude, the vehicle needs to first identify which face of the tensegrity is in contact with the ground.

The rods of the icosahedron tensegrity structure are parallel with the axes of the body frame. As a result, each contact face of the vehicle corresponds to a specific roll-pitch angle pair that can be found as follows:

Assume the contact face of the tensegrity is F_i and node j , node k and node l are the three nodes on the face. Let \mathbf{n}_j^B , \mathbf{n}_k^B , \mathbf{n}_l^B be the positions of these nodes in the vehicle body frame. Thus, \mathbf{w}_i^B , a vector normal to the contact face in the vehicle body frame can be found as:

$$\mathbf{w}_i^B = (\mathbf{n}_j^B - \mathbf{n}_k^B) \times (\mathbf{n}_j^B - \mathbf{n}_l^B) \quad (14)$$

Furthermore, a unit vector normal to the contact face and pointing into the icosahedron tensegrity can be computed as:

$$\mathbf{v}_i^B = \text{sgn}(-\mathbf{n}_j^B \cdot \mathbf{w}_i^B) \frac{\mathbf{w}_i^B}{\|\mathbf{w}_i^B\|} \quad (15)$$

where sgn is the sign function.

Let \mathbf{z}^B be the unit vector pointing along the positive z -axis of the vehicle body frame. The rotational matrix that rotates \mathbf{z}^B to \mathbf{v}_i^B can be found as follows:

$$\mathbf{R}_i = \mathbf{I} + S(\mathbf{z}^B \times \mathbf{v}_i^B) + (S(\mathbf{z}^B \times \mathbf{v}_i^B))^2 \frac{1}{1 + \mathbf{z}^B \cdot \mathbf{v}_i^B} \quad (16)$$

Where $S(\cdot)$ is the skew-symmetric cross product matrix, so that $S(\mathbf{a})\mathbf{b} = \mathbf{a} \times \mathbf{b}$.

As the attitude of the vehicle is defined as a rotation from the vehicle body frame to the Earth frame, \mathbf{R}_i also represents the attitude of a vehicle with contact face F_i and zero yaw angle:

$$(0, \theta_i, \phi_i) = f_{Rr}(\mathbf{R}_i) \quad (17)$$

where $f_{Rr}(\cdot)$ is the conversion from rotation matrix to yaw-pitch-roll Euler-angle set.

Hence, the difference between the estimated attitude and the attitude of a vehicle with contact face F_i and zero yaw angle is:

$$\Delta \mathbf{R}_i = (f_{rR}(0, \theta_i, \phi_i))^T f_{rR}(0, \hat{\theta}, \hat{\phi}) \quad (18)$$

where $f_{rR}(\cdot)$ converts a yaw-pitch-roll Euler-angle set to a rotation matrix, whereas $\hat{\theta}$ and $\hat{\phi}$ are estimated pitch and roll angles of the vehicle from the attitude estimator introduced in Section III. Finally, the contact face is identified:

$$i = \text{argmin}(f_{R\Theta}(\Delta \mathbf{R}_i)) \quad (19)$$

where $f_{R\Theta}(\cdot)$ evaluates the angle of rotation matrix in the sense of the axis-angle representation.

C. Target attitude

To implement a rotation that switches contact face from F_i to F_{i+1} , the vehicle first has to find its target attitude after the rotation.

Consider the following scenario: the tensegrity sits on the ground with contact face F_i and the current attitude of the vehicle is estimated to be $\hat{\mathbf{R}}$. The desired new contact face is F_{i+1} . Notice that face i and face $i+1$ are adjacent. Denote the nodes shared by the two faces as node j and node k . Thus, the desired rotation can be represented with an axis-angle pair. The axis, in the Earth frame, can be found as:

$$\mathbf{e}_{i,i+1}^E = \frac{\hat{\mathbf{R}}(\mathbf{n}_j^B - \mathbf{n}_k^B)}{\|\mathbf{n}_j^B - \mathbf{n}_k^B\|} \quad (20)$$

where \mathbf{n}_j^B and \mathbf{n}_k^B are positions of node j and node k in the vehicle body frame. Meanwhile, let \mathbf{h}_i be a unit vector on face i that is orthogonal to $\mathbf{n}_j^B - \mathbf{n}_k^B$. Similarly, let \mathbf{h}_{i+1} be a unit vector on face $i+1$ that is orthogonal to $\mathbf{n}_j^B - \mathbf{n}_k^B$. Thus Θ , the angle of rotation between the two adjacent faces can be found as:

$$\Theta = \cos^{-1}(\mathbf{h}_i \cdot \mathbf{h}_{i+1}) \quad (21)$$

Hence, the desired target attitude follows:

$$\mathbf{R}_d = f_{AR}((\mathbf{e}_{i,i+1}^E, \Theta)) \hat{\mathbf{R}} \quad (22)$$

where $f_{AR}(\cdot)$ converts an axis-angle pair to a rotation matrix.

D. Reorientation path

We introduce here a method to find the next contact face during the process of autonomous reorientation.

Possible transitions between contact faces are shown in Fig. 5(a). Each node in the graph represents a contact face and two points are connected if the vehicle can transition between two faces via rotating about a tensegrity edge. The weights of the edges in the graph are the angles between two adjacent faces. We define the contact face F_1 as the goal where the vehicle can directly take off. Thus, the objective is to find shortest paths starting from an arbitrary point on the graph to the goal.

It is worth noting that during the experiment, some paths in the graph are found to be physically infeasible, as they require the vehicle to generate a large yaw torque that

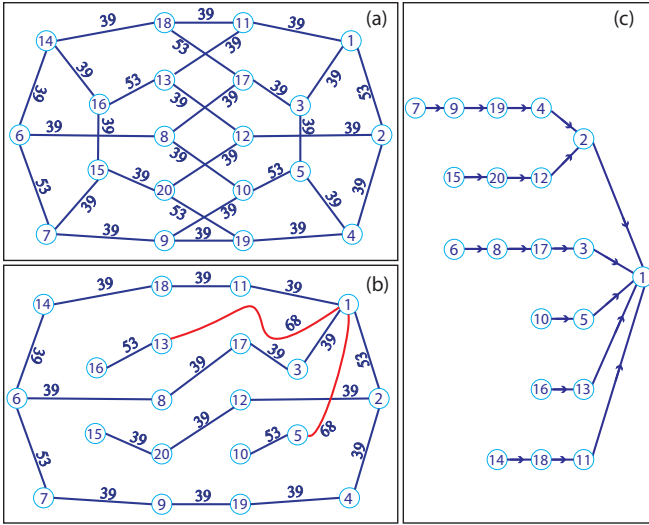


Fig. 5: Connectivity plot of the tensegrity vehicle. Circled numbers indicate indices of contact faces. Weights of the edges are angles of the corresponding rotations in degrees. (a): Connectivity plot based on icosahedron geometry. (b): Connectivity plot after deleting infeasible transitions and adding two new rotations about tensegrity nodes (shown as red curves). (c): Final reorientation path.

exceeds the capability of the vehicle. These connections are deleted from the graph and the operation makes the graph disconnected. To fix the problem, we add two special movements in which the vehicle rotates about a node, instead of an edge, as is represented by the red curve in Fig. 5.(b).

With the new graph generated, A* search is used to find shortest paths from all possible starting points to the goal. The final reorientation path is illustrated in Fig. 5.(c).

E. Implementation of rotations

Large torques are required to rotate the vehicle on the ground. As a result, the vehicle is modified so that the propellers can be controlled to rotate in both clockwise and counterclockwise directions. Consequently, the propellers can generate both positive and negative thrusts. Thus, the envelop of the feasible body torque generated is broadened.

During the process of autonomous reorientation, the same attitude controller and thrust converter introduced in Section III is applied. The desired attitude is computed with the method in Section IV.C. Meanwhile, the desired total thrust is set to zero. It is noteworthy that thrust commands are stopped once the vehicle determines its contact face switches from F_i to F_{i+1} . At this time, the moment arm of the gravity is expected to be zero-length and the gravity will no longer generate a torque against the rotation. Once the vehicle successfully reaches the desired attitude, it will find its next target with the method discussed in Section IV.C and IV.D. Notice that the controller plans at each step, so it can easily adjust the next target if the vehicle rotates to an unexpected attitude due to disturbance. After finding the next target attitude, the vehicle will perform the planned rotation, and repeat the process until it reaches its goal.

V. EXPERIMENTAL RESULTS

This section presents the result of the tensegrity design and the experiments demonstrating the vehicle's collision resilience and its ability to autonomously reorient itself. All experiments can be viewed in the attached video.

A. Result of tensegrity design

The tensegrity structure is designed based on the analysis in Section II. Among all possible candidates satisfying the design requirements, carbon fiber rods with 6mm outer diameter and braided fishing lines are selected based on weight, price and availability. The final tensegrity structure weighs 50g and is about one-fifth of the total 252g vehicle mass. The maximum total thrust of the vehicle is 8.5N, which leads to a 3.4:1 thrust-to-weight ratio.

B. Collision resilience

We command the vehicle to accelerate towards a concrete wall and collide with it to validate the collision resilience of the vehicle. Video sequences of the collision process is shown in Fig. 6. The vehicle collides with the wall at 6.5m/s. All parts within the tensegrity frame remain intact throughout the process and the vehicle maintains its ability to fly after the collision.

C. Autonomous Reorientation

We roll the vehicle like a dice so it starts at a random attitude on the ground. Afterwards, the autonomous reorientation controller is implemented. The vehicle rotates itself to a desired attitude from which it can easily take off.

Fig. 7 illustrates the details of the autonomous reorientation process. The first subplot shows the yaw-pitch-roll angular velocity measured by the vehicle's onboard rate gyroscope, and the second subplot captures the motor thrust commands of the vehicle. Red vertical dashed lines indicate the change of the faces identified as the closest to the ground, as described in Section IV.B. The circled numbers are the indices of the identified contact faces. Note that propeller



Fig. 6: Video sequences of the collision process: 1) Vehicle accelerates towards the wall. 2) Collision starts. 3) Vehicle comes to a full stop. 4) Vehicle bounces back from the wall. The speed of the vehicle right before the collision is 6.5m/s.

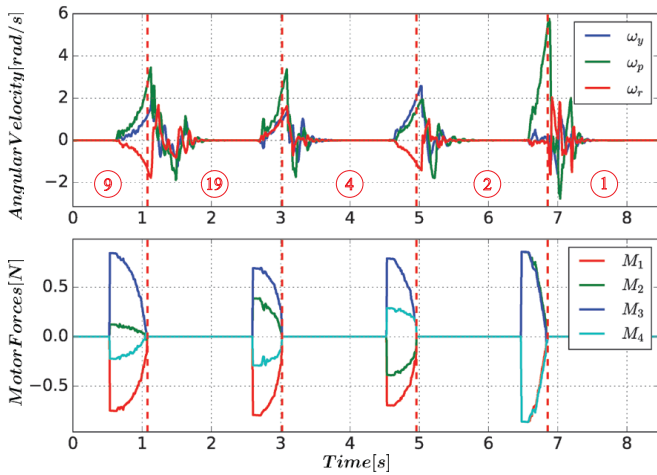


Fig. 7: Autonomous reorientation process of the vehicle. The circled numbers are the indices of the identified contact faces whereas red vertical dashed lines indicate the change of contact faces.

thrust commands become zero once the vehicle determines its contact face has switched. The graph shows that the vehicle is able to recognize its face on the ground and autonomously rotate itself to the goal attitude.

VI. CONCLUSION

In this paper we present the methodology used to design a collision resilient vehicle that adopts the advantage of icosahedron tensegrity structures. We guide the design of the tensegrity with stress analysis of the structure under impact forces during collisions. A cascaded flight controller with a state estimator based on an IMU and a motion capture system is proposed to control the vehicle in flight. We also exploit the 20-faced geometry of the icosahedron tensegrity and develop an autonomous controller that divides the reorientation process into a series of rotations switching the tensegrity's face contacting the ground. Thus, the autonomous controller turns a complicated rotation task into a finite state machine that is easy to analyze and implement.

The tensegrity structure resulting from our design methodology weighs about one-fifth of the vehicle's total mass. Due to its light weight, the tensegrity frame causes limited influence on the vehicle's flight performance. The vehicle can still achieve a 3.4:1 thrust-to-weight ratio, which grants decent flight agility. Finally, we validate the capability of the vehicle with experiments and show that the vehicle can successfully reorient autonomously and survive collisions with a concrete wall at 6.5m/s.

ACKNOWLEDGEMENTS

The experimental testbed at the HiPerLab is the result of contributions of many people, a full list of which can be found at hiperlab.berkeley.edu/members/. We would like to acknowledge funds from the UC Berkeley Fire Research Group: <https://frg.berkeley.edu/> and UC Berkeley College of Engineering.

REFERENCES

- [1] C. J. Salaan, K. Tadokuma, Y. Okada, Y. Sakai, K. Ohno, and S. Tadokoro, "Development and experimental validation of aerial vehicle with passive rotating shell on each rotor," *IEEE Robotics and Automation Letters*, vol. 4, no. 3, pp. 2568–2575, 2019.
- [2] VantageRobotics, "Vantage robotics - snap flying camera," <https://vantagerobotics.com>, (Accessed on 10/19/2019).
- [3] A. Briod, P. Kornatowski, J.-C. Zufferey, and D. Floreano, "A collision-resilient flying robot," *Journal of Field Robotics*, vol. 31, no. 4, pp. 496–509, 2014.
- [4] P. M. Kornatowski, S. Mintchev, and D. Floreano, "An origami-inspired cargo drone," in *2017 IEEE/RSJ International Conference on Intelligent Robots and Systems (IROS)*. IEEE, 2017, pp. 6855–6862.
- [5] Flyability, "Elios 2," <https://www.flyability.com/elios-2>, (Accessed on 11/11/2019).
- [6] S. Mintchev, S. de Rivaz, and D. Floreano, "Insect-inspired mechanical resilience for multicopters," *IEEE Robotics and automation letters*, vol. 2, no. 3, pp. 1248–1255, 2017.
- [7] J. Jang, K. Cho, and G.-H. Yang, "Design and experimental study of dragonfly-inspired flexible blade to improve safety of drones," *IEEE Robotics and Automation Letters*, vol. 4, no. 4, pp. 4200–4207, 2019.
- [8] J. Cheong and R. E. Skelton, "Nonminimal dynamics of general class k tensegrity systems," *International Journal of Structural Stability and Dynamics*, vol. 15, no. 02, p. 1450042, 2015.
- [9] H. Murakami, "Static and dynamic analyses of tensegrity structures. part 1. nonlinear equations of motion," *International Journal of Solids and Structures*, vol. 38, no. 20, pp. 3599–3613, 2001.
- [10] J. J. Rimoli, "On the impact tolerance of tensegrity-based planetary landers," in *57th AIAA/ASCE/AHS/ASC Structures, Structural Dynamics, and Materials Conference*, 2016, p. 1511.
- [11] V. SunSpiral, G. Gorospe, J. Bruce, A. Iscen, G. Korbel, S. Milam, A. Agogino, and D. Atkinson, "Tensegrity based probes for planetary exploration: Entry, descent and landing (edl) and surface mobility analysis," *International Journal of Planetary Probes*, vol. 7, p. 13, 2013.
- [12] K. Kim, L.-H. Chen, B. Cera, M. Daly, E. Zhu, J. Despois, A. K. Agogino, V. SunSpiral, and A. M. Agogino, "Hopping and rolling locomotion with spherical tensegrity robots," in *2016 IEEE/RSJ International Conference on Intelligent Robots and Systems (IROS)*. IEEE, 2016, pp. 4369–4376.
- [13] H. Cotgrove, "Tensegrity drones," <https://www.haydencotgrove.com/tensegrity-drones>, (Accessed on 07/22/2020).
- [14] B. Jessen, "Orthogonal icosahedra," *Nordisk Matematisk Tidskrift*, pp. 90–96, 1967.
- [15] R. Goyal and R. E. Skelton, "Dynamics of class 1 tensegrity systems including cable mass," in *16th biennial ASCE international conference on engineering, science, construction and operations in challenging environments*, 2018.
- [16] S. Pellegrino and C. R. Calladine, "Matrix analysis of statically and kinematically indeterminate frameworks," *International Journal of Solids and Structures*, vol. 22, no. 4, pp. 409–428, 1986.
- [17] G. Monforton and N. El-Hakim, "Analysis of truss-cable structures," *Computers & Structures*, vol. 11, no. 4, pp. 327–335, 1980.